



(One) Utility IRP Planner's Perspective

Phillip Popoff
Manager, Integrated Resource Planning
Puget Sound Energy

June 22, 2010



PSE

PUGET SOUND ENERGY

The Energy To Do Great Things

What I can and can't do...



Long-Haul Transmission Expansion Costs



Long-Haul Transmission Expansion Timing

- Changing Transmission Network Capabilities





Example of Back-of-the-Envelope Screening...



	All-in Capital \$/kW	Annualized Capital (\$/kW/yr)	Fixed Trans Charges (\$/kW/yr)	Annual Fixed Costs (\$/kW/Yr)
Long-Haul Wind	\$ 3,753	\$ 375	\$ 125	\$ 500
Regional Wind	\$ 2,433	\$ 243	\$ 57	\$ 300
				1.67

Regional Wind Capacity Factor: 32% 30%

Multiplier: 1.67 1.67

Equilivant Long-Haul Cap Factor: 53% 50%

Basis for Long-Haul Wind Transmission Assumptions

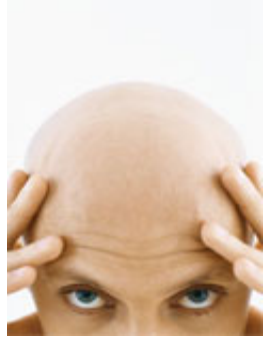
- Four transmission project proposals...i.e., real joint transmission projects



What do / Need?



First...awareness



Transmission Impact of Shuttering Coal Plants

Transmission Push RPS Market Structure



