



*Western Electricity Coordinating Council*

# Regional Transmission Planning in the West

---

## **Western Resource Planners Forum**

June 21, 2010

Bradley M Nickell, PE  
Director of Transmission Planning

Doug Larson  
Executive Director  
Western Interstate Energy Board

# Glossary

---

- DSM – Demand-Side Management
- EE – Energy efficiency
- FERC – Federal Energy Regulatory Commission
- FOA – Funding Opportunity Announcement
- NERC – North American Electric Reliability Corporation
- NGO – non-profit, Non-governmental Organization
- RTEP – Regional Transmission Expansion Planning
- SPG – Subregional Planning Group
- SPSG – Scenario Planning Steering Group
- SPSC – State and Provincial Steering Committee
- TEPPC – Transmission Expansion Planning and Policy Committee
- VGS – Variable Generation Subcommittee
- WGA – Western Governors’ Association
- WIEB – Western Interstate Energy Board
- WREZ – Western Renewable Energy Zone

# TEPPC

## Transmission Expansion Planning Policy Committee

---

- TEPPC's analyses and studies focus on studies with Interconnection-wide implications
  - Reliability, Cost, Emissions
- TEPPC's role does **not** include
  - Detailed project-specific studies
  - Advocating projects
  - Identifying potential “winners” and “losers”
  - Siting and cost allocation
- Provides governance over the RTEP project

# *RTEP*

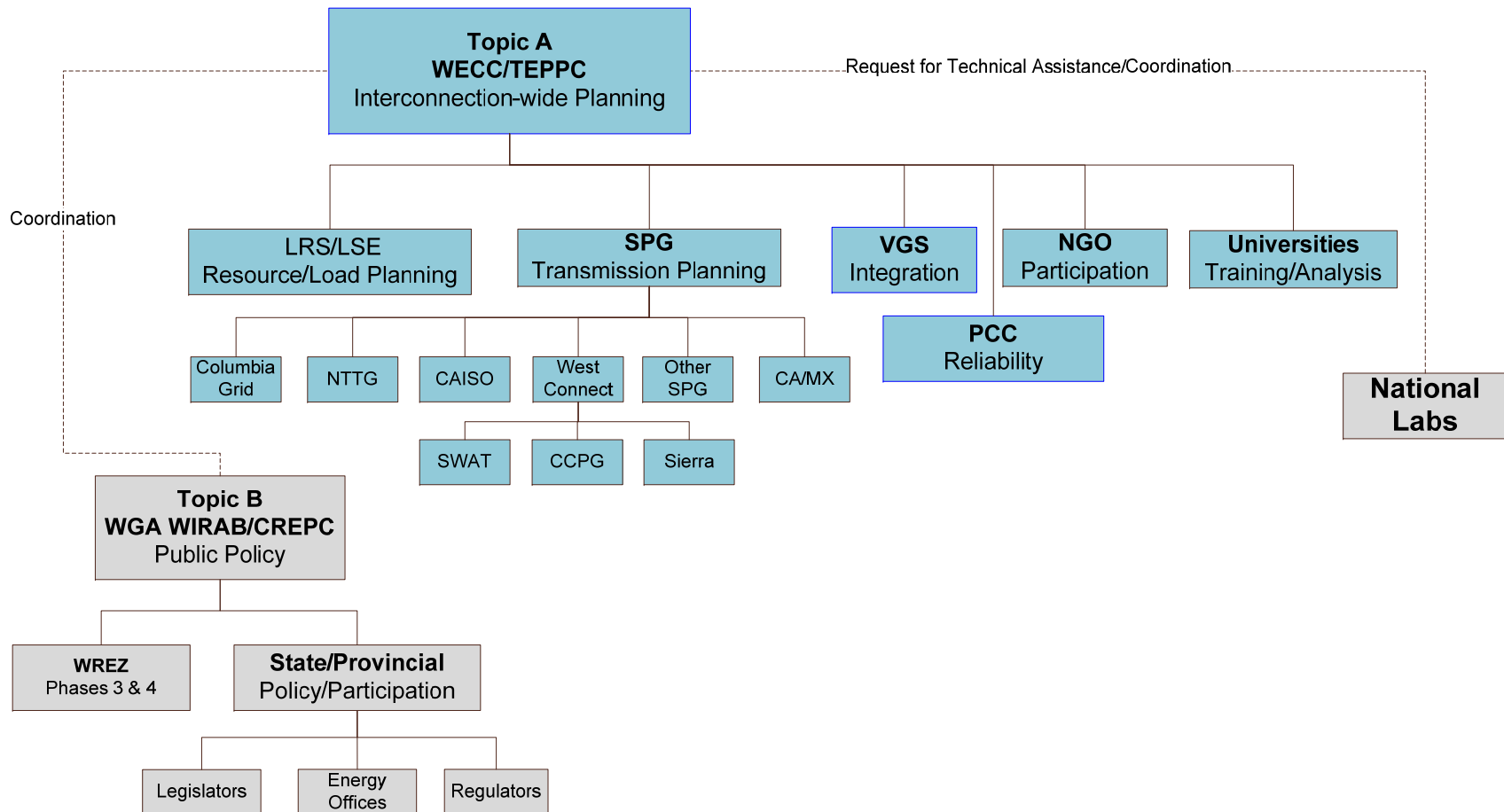
## *Regional Transmission Expansion Planning*

---

- ARRA-funded via a \$14.5M DOE Grant to WECC
  - Corresponding \$12.0M Grant to WGA
- Activities managed by TEPPC
- WECC's proposal available at the RTEP website – [www.wecc.biz](http://www.wecc.biz)

# RTEP

## Activities Funded in part by the DOE Grant



# RTEP

## *Primary Deliverable*

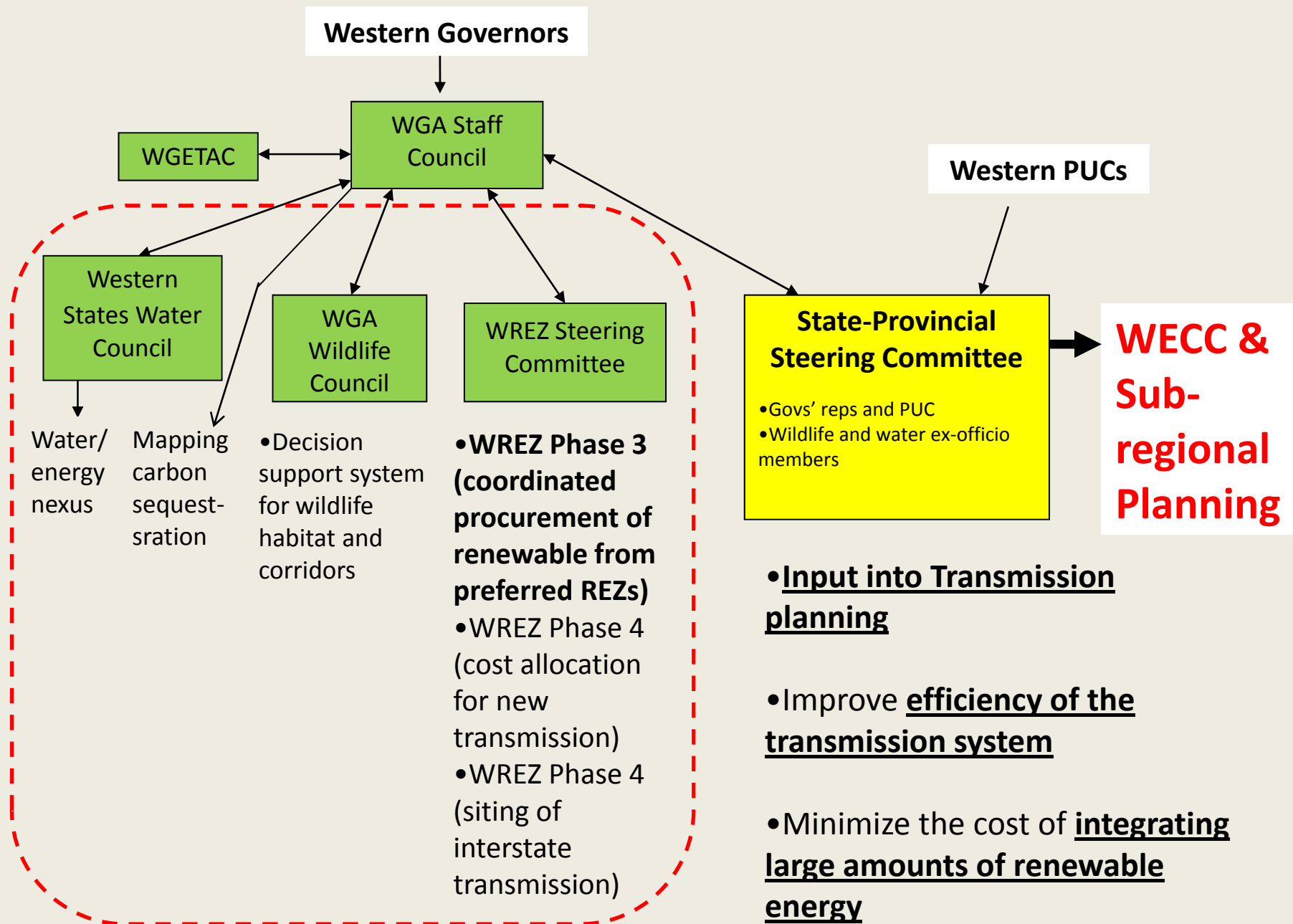
---

- Interconnection-wide Transmission Plans
  - A body of analysis that identifies new or greatly-upgraded lines required under a wide range of potential futures
    - Include operational implications, emissions and cost
  - Analyses must be transparent, and produced through collaboration among industry experts and representatives from states, federal agencies, and relevant NGOs
- Requires multi-constituency steering group to provide strategic direction
  - at least 1/3 of steering group to be state officials

# SPSG

## Scenario Planning Steering Group

Total Number	SPSG members on TEPPC	Representing
5	0	Technology Advocates (wind/solar/geothermal/nuclear/coal/EE/DSM)
1	0	Transmission Owner/Operator/Developer
1	0	Lands protection advocate
1	0	Wildlife advocate
8	2	State Officials (PUC, Energy Office)
1	0	Provincial Official
1	0	Canadian Utility Representative
2	1	Consumer Advocates – One from TEPPC
1	1	Environmental Representative from TEPPC
1	1	WECC Board member from TEPPC
1	1	SPG representative from TEPPC
1	1	LSE representative from TEPPC
1	0	Tribal Representative
<b>25</b>	<b>7</b>	<b>TOTAL</b>



# Transmission Expansion Study Request to WECC

- 2020 Reference Case based on utility plans and state/provincial policies
- Scenarios
  - High DSM scenario
  - Carbon reduction scenario
  - Breakthrough technologies scenario

# FERC Transmission Planning and Cost Allocation NOPR

- Local and regional **transmission planning processes must account for transmission needs driven by state and federal public policy requirements**
- Establish a closer link between transmission planning processes and cost allocation
- Require cost allocation methods for intraregional and interregional transmission facilities to satisfy new cost allocation principles
- Remove right of first refusal for incumbent utilities to build new transmission.

# What does this mean for resource planning?

- Transmission plans drive allocation of costs of new transmission
  - FERC requires cost allocation agreements among transmission providers
    - Can't rely solely on "participant funding"
    - Rely on cost causation to allocation costs
    - Consider free riders
    - Transmission plans must allocate costs for projects in plans
  - FERC decides if no agreements reached
  - FERC will rely on regional transmission plans
- Costs must be roughly allocated to beneficiaries
- Observations:
  - **Resource needs of LSEs should drive the need for new (non-reliability) transmission projects**
  - **Need better links between resource and transmission planning than we have had in the past**

# Questions

---

**Bradley Nickell**  
**Director of Transmission Planning**  
**Western Electricity Coordinating Council**  
615 Arapeen Drive, Suite 210  
Salt Lake City, Utah 84108-1262  
801.819.7604  
[bnickell@wecc.biz](mailto:bnickell@wecc.biz)



All information on the RTEP project can be found on the WECC website at <http://www.wecc.biz/Planning/TransmissionExpansion/RTEP/Pages/default.aspx>

# *RTEP*

## *What Changes?*

---

- Increase the breadth and depth of TEPPC regional transmission planning activities
- Breadth
  - Scenario planning approach
    - Larger matrix of generation/load scenarios
  - Additional tools and study methodologies
  - More involved parties
- Depth
  - Direct tie back to policy and technology drivers
  - Total cost comparisons

# *RTEP*

## *What Won't Change?*

---

- Evolving TEPPC coordination with other committees and organizations
- Process compliance with applicable planning principles of FERC 890
- No endorsement of specific projects
- No Involvement in siting and cost allocation

# *RTEP*

## *Value Propositions*

---

- Increased coordination among entities in the Western Interconnection
- Increased awareness of how energy policy decisions impact reliability and cost
- Ability to answer key policy questions at State, Provincial and Federal levels
- Additional information for use by decision makers in siting and cost allocation proceedings